

- **Measurements**
- STUDIO FLOOR GRID MADE UP OF 600mm SQUARES
- STUDIO WALL 2 TO WALL 4: 39.57m (129.8ft)
- STUDIO WALL 2 TO WALL 4 WITHOUT FIRELANE: 37.61m (123.4ft)
- STUDIO WALL 1 TO WALL 3: 29.57m (97.02ft)
- STUDIO WALL 1 TO WALL 3 WITHOUT FIRELANE: 27.43m (89.11ft)
- STUDIO SPACE: 1165sq m (12,540sq ft)
- STUDIO SPACE WITHOUT FIRELANE: 1031.6m (10,996.1ft)
- IMPOSED LOAD: 12kN per sq m
- HEIGHT TO UNDERSIDE OF LOWER GANTRY: 7.367m
- HEIGHT TO LOWER GANTRY UPPER HANDRAIL: 8.438m
- HEIGHT TO UPPER GANTRY UPPER HANDRAIL: 10.908m
- HEIGHT TO UNDERSIDE OF GRID IS: 15m
- HEIGHT TO OUTER CYC TRACK IS: 9m
- HEIGHT TO MIDDLE CYC TRACK IS: 9m
- HEIGHT TO INNER CYC TRACK IS 11.8m
- MAX HEIGHT OF SCENERY HOOKS IS: approx 13.25m
- MAX HEIGHT OF LIGHTING BARS IS: approx 13.15m
- SIZE OF LOAD IN DOOR: 4m Wide, 5.2m High

- **Hoists**
- NUMBER OF LIGHTING HOISTS: 60 AT 2.25m, 6 CYC AT 2.25m, 44 LONG CYC AT 3.75m
- 22 SCENERY TRACKS WITH 3 OR 4 HOISTS IN EACH
- NUMBER OF SCENIC HOISTS WITH SWL 180KG: 74
- DISTANCE BETWEEN SCENIC TRACKS: 1.5m
- DISTANCE BETWEEN LIGHTING HOISTS: 1.5m

- **Mains**
- GROUND LEVEL MAINS: 2x 125A 3φ
- 2x 63A 3φ (with 32A 3φ piggy backed)
- 20x 32A 1φ (FUSED AT 25A)
- 40x 16A 1φ
- 80x 3Kw SINEWAVE DIMMER CHANNELS
- LOWER GANTRY MAINS: 2x 63A 3φ
- 4x 32A 1φ (FUSED AT 25A)
- 8x 3Kw SINEWAVE DIMMER CHANNELS
- UPPER GANTRY MAINS: 2x 63A 3φ
- 12x 32A 1φ (FUSED AT 25A)
- 24x 3Kw SINEWAVE DIMMER CHANNELS
- LIGHTING HOIST MAINS: 160x 32A 1φ (FUSED AT 25A)
- 580x 3Kw SINEWAVE DIMMER CHANNELS
- 160x 5Kw SINEWAVE DIMMER CHANNELS

- **GRID MAINS:** 2x 400A 3φ POWERLOCK (FUSED AT 320A)
- 4x 32A 3φ (FUSED AT 25A)
- 4x 32A 1φ (FUSED AT 25A)
- 12x 3Kw SINEWAVE DIMMER CHANNELS
- 4x 5Kw SINEWAVE DIMMER CHANNELS
- **SWL**
- STUDIO FLOOR 12kN/m<sup>2</sup>
- GANTRY FLOOR 500kg/m<sup>2</sup>
- GANTRY HANDRAIL CENTRE POINT 100kg, THIRD POINT 120kg
- GRID 150kg/m<sup>2</sup>

N.B. MEASUREMENTS ARE INCLUDED AS A GUIDE. PLEASE DOUBLE CHECK ON SITE IF CRITICAL TO PRODUCTION. ADEQUATE ARRANGEMENTS FOR ACCESS AND EGRESS TO AND FROM THE STUDIO SHOULD BE ALLOWED IN LINE WITH REGULATIONS

- KEY:**
- Fire lane
  - Water Tap
  - Fire Alarm Beacon
  - Fire Alarm Sounder
  - Facility Panel
  - 3 Phase Mains Outlets

PRODUCTION:

DIRECTOR:

DESIGNER:

DRAWN BY:

PRODUCTION DATE:

Useful Telephone Numbers

24hr Control Room 0161 855 6400

dock10 office 0161 886 5111

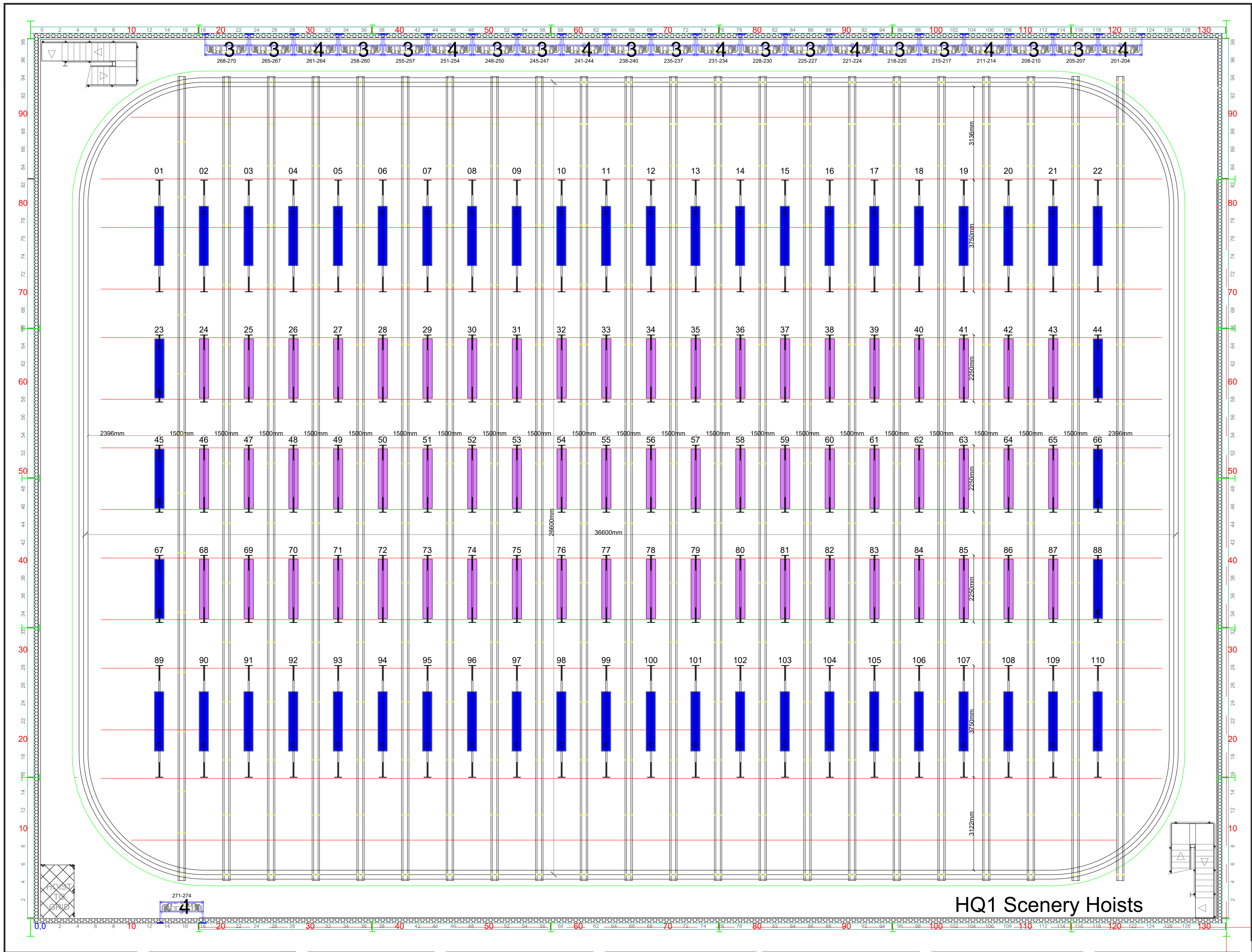
MCR 0161 886 5151

Unauthorized copying or distribution is prohibited.

SCALE: 1:50 @ ISO A0 (1189 X 841MM)

Version: 2

Drafted 10-Jan-22, TK



60 STANDARD 2.25m HOISTS, 6 CYC 2.25m HOISTS, 44 LONG CYC 3.75m HOISTS

22 SCENERY TRACKS WITH 3or4 HOISTS ON EACH

SECTION SHOWING GRID BRACKET DETAIL OF LIGHTING HOISTS

Due to existing steelwork the heights of hoists are different, however upper limits will be set so that all hoists stop at the same point to level all hoists.

